



COURTESY MAINE ROLLER DERBY/PIRELLA GÖTTSCHE LOWE PHOTOGRAPHY

SPORTS
GIRL POWER

In the mood for something a little . . . different? Then check out **Maine Roller Derby's** bout against the Albany All Stars October 6 at the Portland Expo. That's right, roller derby is back, this time as a women-run enterprise full of big hits and non-stop action. Watch the skaters (including Goldie Headlocks, Trouble & Strife, and the Mom Bomb), grab a brew from the beer garden, and sit back for an evening of entertainment like none other. Park St. Doors open at 5 P.M.; the bout starts at 6. \$10 for adults, \$5 for kids. 207-712-3178. www.mainerollerderby.com



COURTESY LEONARD'S MILLS

CULTURE
INTO THE WOODS

Step into your wayback machine at **Living History Days**, the Maine Forest & Logging Museum's periodic reenactment of life as it was in the 1790s in Leonard's Mills, an early pioneer settlement between Milford and Brewer. Take a bateau trip or wagon ride, make cedar shakes, watch a water-powered sawmill, and drink fresh-pressed cider like a real pioneer. Oct. 6 & 7, 10 A.M. - 4 P.M. \$2-\$7. Rte. 178, Bradley. 207-581-2871. www.leonardsmills.com

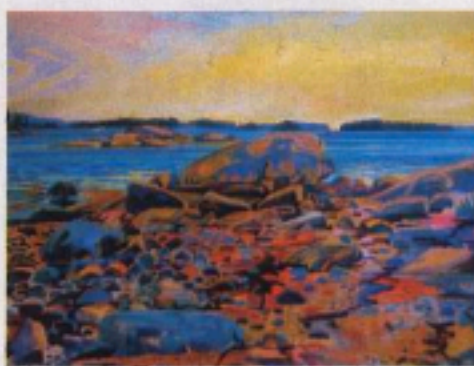
S	M	T	W	T	F	S
	1	2	3	4	5	6
7	8	9	10	11	12	13
14	15	16	17	18	19	20
21	22	23	24	25	26	27
28	29	30	31			

ART
ALL NATURAL

Maine is famous for its landscape, and Maine is famous for its landscape painters. So what makes better sense than an art sale benefiting the places these artists love? That's the concept behind **Contours**, an exhibit at the Élan Fine Arts gallery in Rockport that aims to raise money for the nonprofit Coastal Mountains Land Trust.

Participating artists include Greg Mort, Alan Magee, Thomas Paquette, Joyce Tenneson, Connie Hayes, Dahlov Ipcar, Linden Frederick, Jill Hoy, Marguerite Robichaux, Alan Bray, Lois Dodd, and Philip Frey. Oct. 5 - 28. 86 Pascal Ave. Rockport. 207-236-4401 www.elanfinearts.com

EVENTS



JILL HOY/COVER THE PENOBSCOT BAY 3